

产品规格书
PRODUCT SPECIFICATION

客户名称/Customer	
客户料号/Part No.	
客户承认签章 Customer Approved Signatures	

供方/Supplier	友容新源电气（昆山）有限公司 Cfriend Electric (kunshan) Co.,Ltd
文件编号/Spec No.	CF-PS211119004
品名/Description	FUSE
型号/Model	CFM8***KT
日期/Date	2020. 5. 6
设计/Designed	批准/Approved
胡曾	kevin

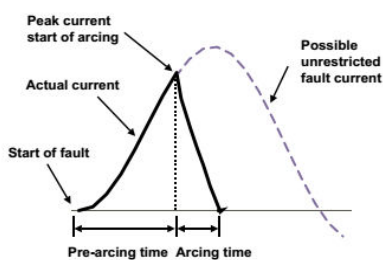
地址：中国江苏省昆山市周市镇陆扬友谊北路153号
ADD:No.153, Youyi North road, Zhoushi Town, Kunshan City,
Jiangsu Province in china

电话/Tel: 86-512-36698841 传真/Fax: 86-512-36698843
Http: www.cfriend-electric.com

CFM-FUSES Fuses for Semiconductor Protection IEC60269-4/GB/T13539.4 standard

Size	Rated Voltage	Operating Class	Rated Breaking Capacity
------	---------------	-----------------	-------------------------

1*	ac 690V	a R	690V@100kA
----	---------	-----	------------



型号 Product model

- CFM8040KT~CFM8400KT

型号诠释 Product Illustration

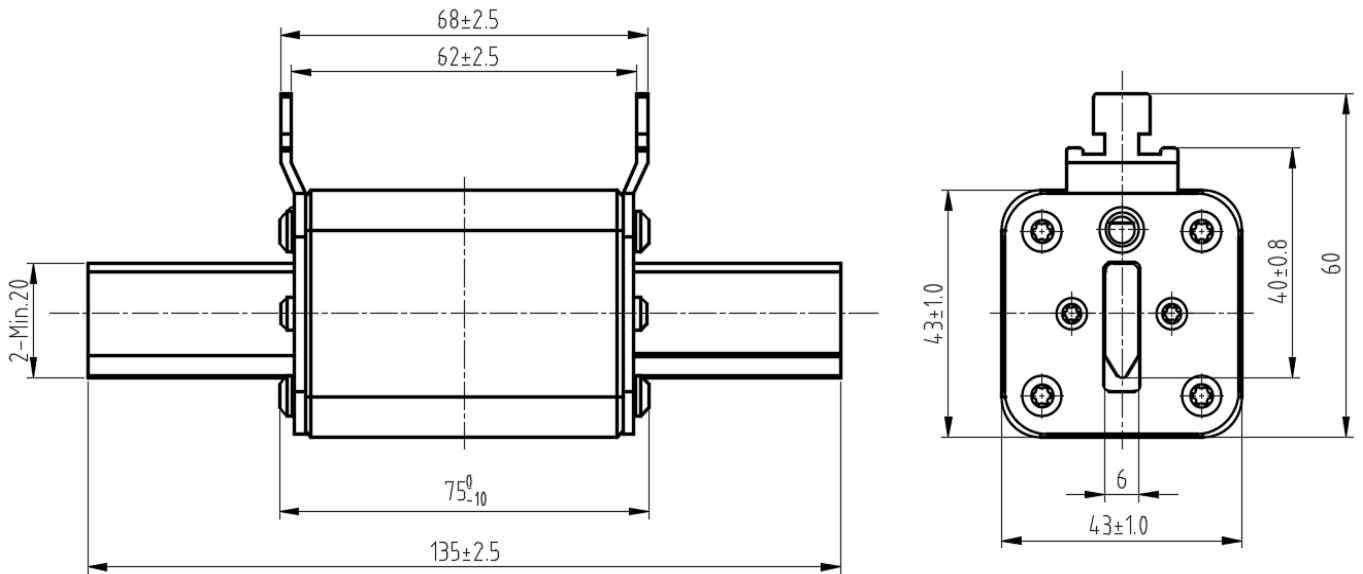
C F M 8 □□□ K T
 ① ② ③ ④ ⑤ ⑥ ⑦

- ① 交流快速半导体保护用熔断体 (AC fast-acting fuses for semiconductor protection)
- ② 额定电压(Rated Voltage): F 690Vac
- ③ 安装方式(Way of Mounting): M 插入式安装(DIN43620刀型)
- ④ 管号规格(Size): 8 8号管 (size 1*)
- ⑤ 额定电流(Rated Current): A
- ⑥ 安装距离(Mounting Distance): K 138mm
- ⑦ 指示类型(Type of Indication): T (T Order)

描述 Description

- 安全可靠的螺栓连接方式 (Safe and reliable connection way of bolting)
- 优越的电气性能，迅速切断系统中的故障电流。
(Excellent electric performance, cut down fault current fastly)
- 设计符合 IEC60269-4/GB/T13539.4 (Design according to IEC60269-4/GB/T13539.4)
- 产品过程符合 IATF16949质量管理体系要求 (Product Process Conforms to IATF16949)
- 产品符合RoHS (Product conform to ROHS)

外形尺寸 Dimensions

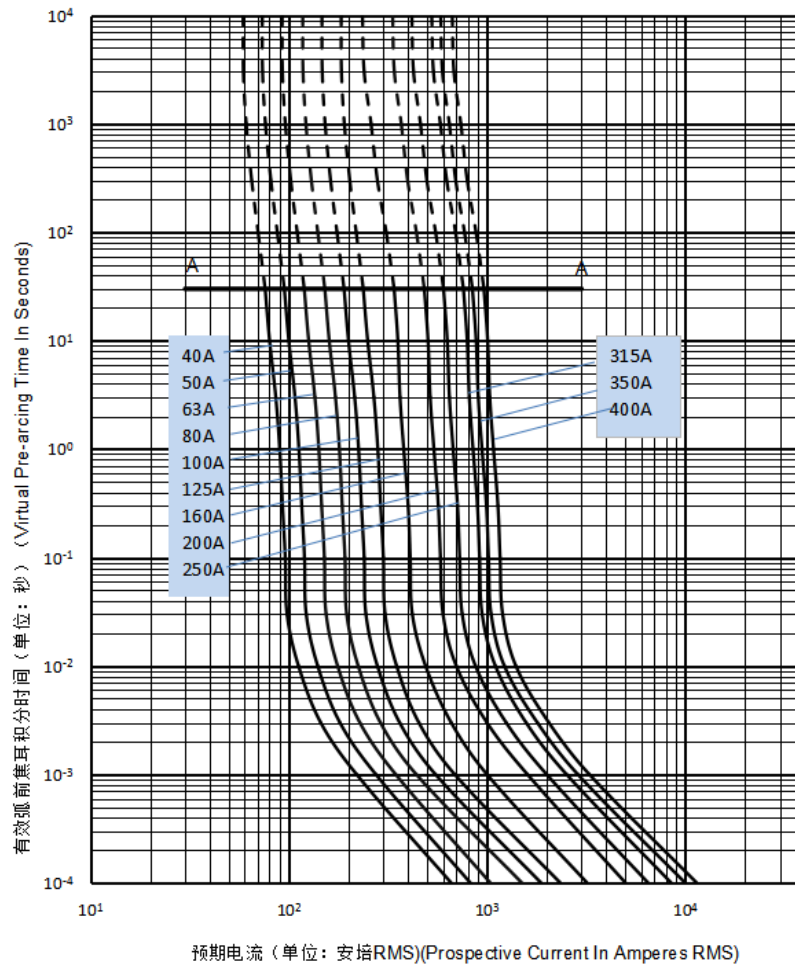


物料选择 Selection and ordering data

Rated current 【A】	Rated voltage 【V】	Part Number	Power Loss 【w】	Pre-arcing I^2t 【A ² S】	Total @690V I^2t 【A ² S】	Weight 【Kg/1pcs】	Pack
40	690V	CFM8040KT	9	38	280	0.35	3
50		CFM8050KT	10	75	530	0.35	3
63		CFM8063KT	12	115	780	0.35	3
80		CFM8080KT	14	180	1400	0.35	3
100		CFM8100KT	16	360	2500	0.35	3
125		CFM8125KT	20	530	3900	0.35	3
160		CFM8160KT	23	1000	7800	0.35	3
200		CFM8200KT	25	2300	15500	0.35	3
250		CFM8250KT	37	4100	28000	0.35	3
315		CFM8315KT	56	6800	46000	0.35	3
350		CFM8350KT	73	10000	70000	0.35	3
400		CFM8400KT	81	14000	100000	0.35	3

时间电流特性曲线 Time- Current Characteristics Curve

时间-电流曲线 (Time -Current Curve)



使用条件 Operating condition

No	项目 Item	要求 Requirements
1	使用电压范围 Operating voltage	$\leq 690V$
2	使用环境 Operating environment	$-5^{\circ}C \sim 85^{\circ}C$ RH < 50% ($\geq 40^{\circ}C$) RH < 90% ($\leq 20^{\circ}C$)
3	保存环境 Storage environment	$-5^{\circ}C \sim 40^{\circ}C$ RH < 75%
4	海拔高度 altitude	$\leq 2000m$ (超过范围请联系厂商)
5	安装扭矩 Install torque	
6	污秽等级 Pollution level	III