

**产品规格书**  
**PRODUCT SPECIFICATION**

客户名称/Customer	
客户料号/Part No	
客户承认签章 Custome Approved Signatures	

供方/Supplier	友容新源电气（昆山）有限公司
文件编号/Spec No	CF-PS0804005
品名/Description	FUSE
型号/Model	FDP-□□□A
日期/Date	12/14/2018
设计/Designed	批准/Approved
胡曾	kevin

地址：中国江苏省昆山市周市镇陆扬友谊北路153号  
ADD:No.153, Youyi North road, Zhoushi Town, Kunshan City,  
Jiangsu Province in china

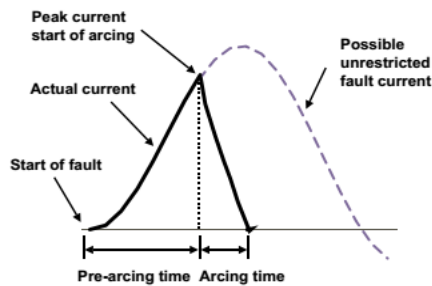
电话/Tel: 86-512-36698841      传真/Fax: 86-512-36698843

Http: [www.cfriend-electric.com](http://www.cfriend-electric.com)

## FDP-FUSES Fuses for Semiconductor Protection IEC60269-4 standard

SIZE	Rated Voltage	Operating Class	Rated Breaking Capacity
------	---------------	-----------------	-------------------------

25	700Vdc/ac	aR	700VDC@20kA 700VAC@100kA
----	-----------	----	-----------------------------



### 型号 Product model

- FDP-□□□A

### 型号诠释 Product interpretation

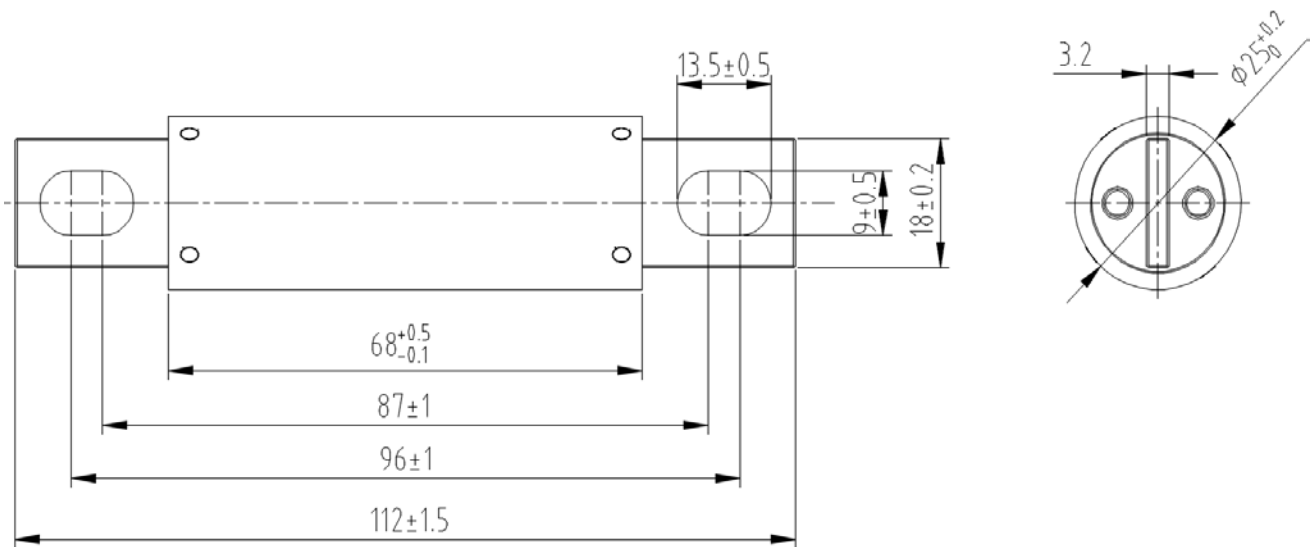
FD P- □□□A  
① ② ③

- ①北美熔断器 North American fuse
- ②额定电压 Rated Voltage :P 700Vac/dc
- ③额定电流 Rated Current :A

### 描述 Description

- 安全可靠的螺栓连接方式 Safe and reliable connecting way of bolt-on
- 优越的电气性能，快速保护EV汽车系统，迅速切断系统中的故障电流。  
Excellent electric performance, quick protection for EV system, cut down the fault current of the system.
- 设计符合 IEC60269-4 Product design conforms to IEC60269-4
- 产品过程符合IATF16949质量管理体系要求 Product process conforms to IATF16949
- 产品、包装符合RoHS Product and Package conforms to RoHS

## 外形尺寸 Dimensions(单位/ unit:mm)



## 物料选择 Selection and ordering data

Rated current 【A】	Rated voltage 【V】	Part Number	Power Loss 【W】	Pre-arcing $I^2t$ 【A <sup>2</sup> S】	Total @700V 【A <sup>2</sup> S】	Weight 【Kg/1】	Pack
70	700	EVPE-70A	10	330	2000	0.1	1
80		EVPE-80A	12	370	2400		
90		EVPE-90A	15	600	2800		
100		EVPE-100A	16	700	3500		

## 使用条件 Operating condition

No	项目 Item	要求 Requirements
1	使用电压范围 Operating voltage	$\leq 700V$
2	使用环境 Operating environment	$-40^{\circ}C \sim 85^{\circ}C$ $RH < 50\% (\geq 40^{\circ}C)$ $RH < 90\% (\leq 20^{\circ}C)$
3	保存环境 Storage environment	$-5^{\circ}C \sim 40^{\circ}C$ $RH < 75\%$
4	海拔高度 altitude	$\leq 3000m$
5	安装扭矩 Install torque	M8 $12 \pm 1N.m$
6	污秽等级 Pollution level	III

# 时间电流特性曲线 Time- Current Characteristics Curve

